

Leaf Aptus-II

Digital Camera Backs

Leaf Aptus-II 12	80 MP
Leaf Aptus-II 10	56 MP
Leaf Aptus-II 8	40 MP
Leaf Aptus-II 7	33 MP
Leaf Aptus-II 5	22 MP



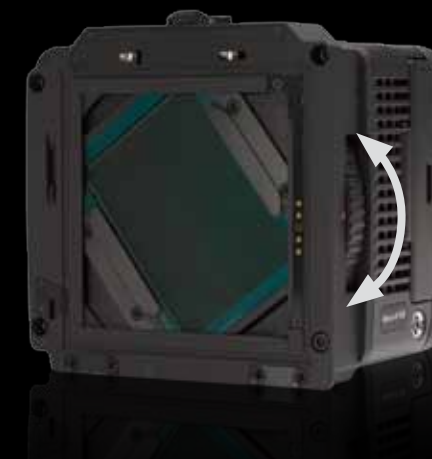
Mamiya Leaf

"My Leaf Aptus-II lets me shoot all day long with no problems. The combination of its robustness and the image quality produced by its high-resolution sensor makes this camera back ideal for commercial work."

Nuno Correia



The **Leaf Aptus-II** series of camera backs offers professional photographers the speed, image quality and flexibility to push their work beyond expectations.



Highest Resolution

The Leaf Aptus-II family includes the Leaf Aptus-II 12 and Aptus-II 12R. Offering the best price-performance ratio of any 80MP single-shot capture device, the Leaf Aptus-II 12 allows you to take your photography further by capturing the highest quality, single-shot images possible. Working closely with our sensor manufacturer, we developed a full frame, medium format, 80MP CCD sensor, measuring 53.7 x 40.3 mm, providing the ability to record the finest detail, eliminating the need to use cumbersome multi-shot solutions.

Complete Control: Faster Shoot-to-delivery

The Leaf Aptus-II lets you shoot anywhere. Featuring a bright 6 x 7 cm touch screen, enabling you to check your shots under all kinds of challenging lighting conditions, both in-studio and outside, as well as offering a wide range of on-screen functions.

Extensive Compatibility

Leaf Aptus-II backs are compatible with over 80 medium and large format cameras, and the Leaf RAW files can be opened in many leading workflow applications.

- Connect with view cameras, wide-angle optics and tilt-and-shift movements.
- Leaf RAW files can be used in most 3rd party applications such as Adobe Camera Raw, Adobe Lightroom, Iridient Raw Developer and Apple Aperture.

High Speed

The Leaf Aptus-II series of camera backs offers capture speeds as fast as under 1 second per frame.

- Fastest image transfer speed, by using advanced FireWire 800 and UDMA CompactFlash technologies.

Uncompromising Image Quality

The Leaf Aptus-II delivers stunning, film-like quality that rivals any capture device available in the industry, regardless of resolution.

- Large, specially designed sensor with unsurpassed 12 f-stops of dynamic range provides unmatched detail, richness and color, low noise, and striking highlights.
- Lossless 16-bit file compression accelerates file handling without loss of image quality.

Wireless Preview and Control

With the Leaf Aptus-II, you, your client, or an art director can use Leaf Capture Remote to preview shots during the shoot on an Apple iPhone, iPad or iPod touch, or use Phase One's Capture Pilot, to review and tag images and to remotely control your camera.

Internal Rotating Sensor

The Leaf Aptus-II R series of backs - available in 56MP and 80MP - lets you change from landscape to portrait orientation with a simple turn of the Leaf Verto internal sensor rotation dial. Keep your camera upright at all times and ensure your back is protected from dust by rotating just the sensor.

Leaf Capture Software

Designed expressly to maximize productivity with Leaf camera backs, the latest Leaf Capture software is the professional photographer's tool to quickly and easily move from image capture to print. Use it to check and perfect your images while you shoot, including live video preview; ideal for high-volume productions on tight deadlines, such as catalogs and fashion shoots.

Capture One Software

Photographers are able to leverage the unique features and workflow environment of Phase One's Capture One workflow software to perfect and enhance their images, create web galleries and print contact sheets directly from the computer.

Excellent Support

At Mamiya Leaf, we understand how much you count on immediate, timely service and support. That is why we've implemented a worldwide network of partners, with dedicated support teams only a phone call away.

Long Term Investment

Your Leaf back has the highest resale value on the market, even after many years of use. And to ensure that you are always using the best, Leaf offers an industry-leading upgrade policy.

Specifications

Leaf Aptus-II		12	10	8	7	5
CCD Size	mm	53.7 x 40.3	56 x 36	44 x 33	48 x 36	48 x 36
	active pixels	10,320 x 7,752	9,334 x 6,000	7,312 x 5,474	6,666 x 4,992	5,344 x 4,008
	resolution	80 MP	56 MP	40 MP	33 MP	22 MP
Capture Rate (sec/frame)		1.5	1	0.8	1.1	0.9
File Size	MOS	165 MB	115 MB	80 MB	67 MB	42 MB
	MOS Compressed	107 MB	78 MB	56 MB	47 MB	21 MB
	TIFF 16-bit	480 MB	345 MB	240 MB	190 MB	128 MB
	8 bit RGB	240 MB	172 MB	120 MB	102 MB	63 MB
ISO Sensitivity		50-800	80-800	80-800	50-800	25-400
Dynamic range		12 f-stops				
Exposure time		1/10,000 – 32 seconds				
Color depth		16 bits (65,536 levels per channel)				
Color management workflow		Range of 16 profiles including factory profiles, plus optional ability for users to create their own custom camera profiles				
Leaf RAW file format		A standard, open RAW format compatible with many leading applications				
File management		Preshoot file naming, image flagging, full browsing, creation of job folders, custom file annotations				
Image viewing		Preview up to 20 images on one LCD screen, true 1:1 zoom				
Image measuring tools		Histogram, exposure alarms, average exposure meter, spot meter (f-stop)				
LCD Screen						
Operation		Advanced, bright, high-contrast touch screen interface for indoor or outdoor work				
Size		6 x 7 cm (3.5")				
Languages		English, German, French, Spanish, Italian, Chinese and Japanese				
Image settings		Custom and preset gray balance, ISO, selectable image-setting tags, IPTC and EXIF metadata				
Cameras Supported						
Phase One		645DF, 645AF				
Leaf/Sinar		AFi/HY6				
Mamiya		645DF, 645AFD, 645AFD II, 645AFDIII, RZ67, RZ67 Pro II, RZ Pro IId, RB67				
Hasselblad		H and V series (not including 200 and 2000 versions)				
Contax		645AF				
Fuji		GX680II, GX680III				
Bronica		SQA/ SQAI/ ETRSi				
Compatible view cameras		Alpa, Arca, Cambo, Horseman, Linhof, Sinar, Toyo, Rollei X-Act2 and others via Leaf Graflok or third-party adapters				
Additional						
Operating conditions		Back: 0°–40°C (32°–104°F), Humidity: 15%–80% RH (non-condensing)				
Properties		Dimensions: W 95 x H 82 x D 59 mm, Weight: 600g (1.3lbs)				
Portable storage options		CF cards and high volume portable FireWire disks.				
Portable power		Leaf battery: 2350mAh power				

About Mamiya Leaf

Mamiya Leaf offers high-end digital photographic solutions to professional and advanced amateur photographers.

Leveraging 70 years of Mamiya camera and optics expertise with the digital imaging technology of Leaf -the company that introduced the world's first commercial digital camera back - Mamiya Leaf represents the finest in high end photographic solutions, and is dedicated to improving the quality of its products, technologies and services to support the advancement of professional digital photography.

For more information
visit www.mamiyaleaf.com

Mamiya Leaf US

75 Virginia Road, North White Plains, New York 10603
Email: sales@mamiyaleaf.com

Mamiya Leaf Europe

Roskildevej 39, DK-2000 Frederiksberg, Denmark
Email: sales@mamiyaleaf.com

Mamiya Leaf Asia Pacific

Rm 1009, 10/F, Eight Commercial Tower
8 Sun Yip Street, Siu Sai Wan, Hong Kong
Email: sales@mamiyaleaf.com

Distributor information:



Mamiya Leaf